

CEN

CWA 16926-70

WORKSHOP

February 2020

AGREEMENT

ICS 35.200; 35.240.15; 35.240.40

English version

**Extensions for Financial Services (XFS) interface
specification Release 3.40 - Part 70: Vendor Dependent
Mode (VDM) Device Class Interface - Migration from
Version 3.30 (CWA 16926) to Version 3.40 (this CWA) -
Programmer's Reference**

This CEN Workshop Agreement has been drafted and approved by a Workshop of representatives of interested parties, the constitution of which is indicated in the foreword of this Workshop Agreement.

The formal process followed by the Workshop in the development of this Workshop Agreement has been endorsed by the National Members of CEN but neither the National Members of CEN nor the CEN-CENELEC Management Centre can be held accountable for the technical content of this CEN Workshop Agreement or possible conflicts with standards or legislation.

This CEN Workshop Agreement can in no way be held as being an official standard developed by CEN and its Members.

This CEN Workshop Agreement is publicly available as a reference document from the CEN Members National Standard Bodies.

CEN members are the national standards bodies of Austria, Belgium, Bulgaria, Croatia, Cyprus, Czech Republic, Denmark, Estonia, Finland, France, Germany, Greece, Hungary, Iceland, Ireland, Italy, Latvia, Lithuania, Luxembourg, Malta, Netherlands, Norway, Poland, Portugal, Republic of North Macedonia, Romania, Serbia, Slovakia, Slovenia, Spain, Sweden, Switzerland, Turkey and United Kingdom.



EUROPEAN COMMITTEE FOR STANDARDIZATION
COMITÉ EUROPÉEN DE NORMALISATION
EUROPÄISCHES KOMITEE FÜR NORMUNG

CEN-CENELEC Management Centre: Rue de la Science 23, B-1040 Brussels

© 2020 CEN All rights of exploitation in any form and by any means reserved worldwide for CEN national Members.

Ref. No.:CWA 16926-70:2020 E

Table of Contents

European Foreword.....	3
1. Migration Information.....	7
2. Vendor Dependent Mode	8
2.1 VDM Entry triggered by XFS Application	9
2.2 VDM Entry triggered by Vendor Dependent Switch	10
2.3 VDM Exit triggered by XFS Application.....	11
2.4 VDM Exit triggered by Vendor Dependent Switch.....	12
2.5 Controlling / Determining the Active Interface	13
2.5.1 Vendor Dependent Application independent of the VDM Service Provider	13
2.5.2 Vendor Dependent Application under Control of the VDM Service Provider.....	14
3. References	15
4. Info Commands	16
4.1 WFS_INF_VDM_STATUS.....	16
4.2 WFS_INF_VDM_CAPABILITIES	18
4.3 WFS_INF_VDM_ACTIVE_INTERFACE	19
5. Execute Commands	20
5.1 WFS_CMD_VDM_ENTER_MODE_REQ.....	20
5.2 WFS_CMD_VDM_ENTER_MODE_ACK.....	21
5.3 WFS_CMD_VDM_EXIT_MODE_REQ	22
5.4 WFS_CMD_VDM_EXIT_MODE_ACK	23
5.5 WFS_CMD_VDM_SET_ACTIVE_INTERFACE.....	24
6. Events.....	25
6.1 WFS_SRVE_VDM_ENTER_MODE_REQ	25
6.2 WFS_SRVE_VDM_EXIT_MODE_REQ.....	26
6.3 WFS_SYSE_VDM_MODEENTERED	27
6.4 WFS_SYSE_VDM_MODEEXITED.....	28
6.5 WFS_SRVE_VDM_INTERFACE_CHANGED	29
7. C-Header file	30

European Foreword

This CEN Workshop Agreement has been developed in accordance with the CEN-CENELEC Guide 29 “CEN/CENELEC Workshop Agreements – The way to rapid consensus” and with the relevant provisions of CEN/CENELEC Internal Regulations – Part 2. It was approved by a Workshop of representatives of interested parties on 2019-10-08, the constitution of which was supported by CEN following several public calls for participation, the first of which was made on 1998-06-24. However, this CEN Workshop Agreement does not necessarily include all relevant stakeholders.

The final text of this CEN Workshop Agreement was provided to CEN for publication on 2019-12-12.

The following organizations and individuals developed and approved this CEN Workshop Agreement:

- ATM Japan LTD
- AURIGA SPA
- BANK OF AMERICA
- CASHWAY TECHNOLOGY
- CHINAL ELECTRONIC FINANCIAL EQUIPMENT SYSTEM CO.
- CIMA SPA
- CLEAR2PAY SCOTLAND LIMITED
- DIEBOLD NIXDORF
- EASTERN COMMUNICATIONS CO. LTD – EASTCOM
- FINANZ INFORMATIK
- FUJITSU FRONTTECH LIMITED
- FUJITSU TECHNOLOGY
- GLORY LTD
- GRG BANKING EQUIPMENT HK CO LTD
- HESS CASH SYSTEMS GMBH & CO. KG
- HITACHI OMRON TS CORP.
- HYOSUNG TNS INC
- JIANGSU GUOQUANG ELECTRONIC INFORMATION TECHNOLOGY
- KAL
- KEBA AG
- NCR FSG
- NEC CORPORATION
- OKI ELECTRIC INDUSTRY SHENZHEN

CWA 16926-70:2020 (E)

- OKI ELECTRONIC INDUSTRY CO
- PERTO S/A
- REINER GMBH & CO KG
- SALZBURGER BANKEN SOFTWARE
- SIGMA SPA
- TEB
- ZIJIN FULCRUM TECHNOLOGY CO

It is possible that some elements of this CEN/CWA may be subject to patent rights. The CEN-CENELEC policy on patent rights is set out in CEN-CENELEC Guide 8 “Guidelines for Implementation of the Common IPR Policy on Patents (and other statutory intellectual property rights based on inventions)”. CEN shall not be held responsible for identifying any or all such patent rights.

The Workshop participants have made every effort to ensure the reliability and accuracy of the technical and non-technical content of CWA 16926-70, but this does not guarantee, either explicitly or implicitly, its correctness. Users of CWA 16926-70 should be aware that neither the Workshop participants, nor CEN can be held liable for damages or losses of any kind whatsoever which may arise from its application. Users of CWA 16926-70 do so on their own responsibility and at their own risk.

The CWA is published as a multi-part document, consisting of:

Part 1: Application Programming Interface (API) - Service Provider Interface (SPI) - Programmer's Reference

Part 2: Service Classes Definition - Programmer's Reference

Part 3: Printer and Scanning Device Class Interface - Programmer's Reference

Part 4: Identification Card Device Class Interface - Programmer's Reference

Part 5: Cash Dispenser Device Class Interface - Programmer's Reference

Part 6: PIN Keypad Device Class Interface - Programmer's Reference

Part 7: Check Reader/Scanner Device Class Interface - Programmer's Reference

Part 8: Depository Device Class Interface - Programmer's Reference

Part 9: Text Terminal Unit Device Class Interface - Programmer's Reference

Part 10: Sensors and Indicators Unit Device Class Interface - Programmer's Reference

Part 11: Vendor Dependent Mode Device Class Interface - Programmer's Reference

Part 12: Camera Device Class Interface - Programmer's Reference

Part 13: Alarm Device Class Interface - Programmer's Reference

Part 14: Card Embossing Unit Device Class Interface - Programmer's Reference

Part 15: Cash-In Module Device Class Interface - Programmer's Reference

Part 16: Card Dispenser Device Class Interface - Programmer's Reference

Part 17: Barcode Reader Device Class Interface - Programmer's Reference

Part 18: Item Processing Module Device Class Interface - Programmer's Reference

Part 19: Biometrics Device Class Interface - Programmer's Reference

Parts 20 - 28: Reserved for future use.

Parts 29 through 47 constitute an optional addendum to this CWA. They define the integration between the SNMP standard and the set of status and statistical information exported by the Service Providers.

Part 29: XFS MIB Architecture and SNMP Extensions - Programmer's Reference

- Part 30: XFS MIB Device Specific Definitions - Printer Device Class
- Part 31: XFS MIB Device Specific Definitions - Identification Card Device Class
- Part 32: XFS MIB Device Specific Definitions - Cash Dispenser Device Class
- Part 33: XFS MIB Device Specific Definitions - PIN Keypad Device Class
- Part 34: XFS MIB Device Specific Definitions - Check Reader/Scanner Device Class
- Part 35: XFS MIB Device Specific Definitions - Depository Device Class
- Part 36: XFS MIB Device Specific Definitions - Text Terminal Unit Device Class
- Part 37: XFS MIB Device Specific Definitions - Sensors and Indicators Unit Device Class
- Part 38: XFS MIB Device Specific Definitions - Camera Device Class
- Part 39: XFS MIB Device Specific Definitions - Alarm Device Class
- Part 40: XFS MIB Device Specific Definitions - Card Embossing Unit Class
- Part 41: XFS MIB Device Specific Definitions - Cash-In Module Device Class
- Part 42: Reserved for future use.
- Part 43: XFS MIB Device Specific Definitions - Vendor Dependent Mode Device Class
- Part 44: XFS MIB Application Management
- Part 45: XFS MIB Device Specific Definitions - Card Dispenser Device Class
- Part 46: XFS MIB Device Specific Definitions - Barcode Reader Device Class
- Part 47: XFS MIB Device Specific Definitions - Item Processing Module Device Class
- Part 48: XFS MIB Device Specific Definitions - Biometrics Device Class
- Parts 49 - 60 are reserved for future use.
- Part 61: Application Programming Interface (API) - Migration from Version 3.30 (CWA 16926) to Version 3.40 (this CWA) - Service Provider Interface (SPI) - Programmer's Reference
- Part 62: Printer and Scanning Device Class Interface - Migration from Version 3.30 (CWA 16926) to Version 3.40 (this CWA) - Programmer's Reference
- Part 63: Identification Card Device Class Interface - Migration from Version 3.30 (CWA 16926) to Version 3.40 (this CWA) - Programmer's Reference
- Part 64: Cash Dispenser Device Class Interface - Migration from Version 3.30 (CWA 16926) to Version 3.40 (this CWA) - Programmer's Reference
- Part 65: PIN Keypad Device Class Interface - Migration from Version 3.30 (CWA 16926) to Version 3.40 (this CWA) - Programmer's Reference
- Part 66: Check Reader/Scanner Device Class Interface - Migration from Version 3.30 (CWA 16926) to Version 3.40 (this CWA) - Programmer's Reference
- Part 67: Depository Device Class Interface - Migration from Version 3.30 (CWA 16926) to Version 3.40 (this CWA) - Programmer's Reference
- Part 68: Text Terminal Unit Device Class Interface - Migration from Version 3.30 (CWA 16926) to Version 3.40 (this CWA) - Programmer's Reference
- Part 69: Sensors and Indicators Unit Device Class Interface - Migration from Version 3.30 (CWA 16926) to Version 3.40 (this CWA) - Programmer's Reference
- Part 70: Vendor Dependent Mode Device Class Interface - Migration from Version 3.30 (CWA 16926) to Version 3.40 (this CWA) - Programmer's Reference
- Part 71: Camera Device Class Interface - Migration from Version 3.30 (CWA 16926) to Version 3.40 (this CWA) - Programmer's Reference
- Part 72: Alarm Device Class Interface - Migration from Version 3.30 (CWA 16926) to Version 3.40 (this CWA) - Programmer's Reference
- Part 73: Card Embossing Unit Device Class Interface - Migration from Version 3.30 (CWA 16926) to Version 3.40

CWA 16926-70:2020 (E)

(this CWA) - Programmer's Reference

Part 74: Cash-In Module Device Class Interface - Migration from Version 3.30 (CWA 16926) to Version 3.40 (this CWA) - Programmer's Reference

Part 75: Card Dispenser Device Class Interface - Migration from Version 3.30 (CWA 16926) to Version 3.40 (this CWA) - Programmer's Reference

Part 76: Barcode Reader Device Class Interface - Migration from Version 3.30 (CWA 16926) to Version 3.40 (this CWA) - Programmer's Reference

Part 77: Item Processing Module Device Class Interface - Migration from Version 3.30 (CWA 16926) to Version 3.40 (this CWA) - Programmer's Reference

In addition to these Programmer's Reference specifications, the reader of this CWA is also referred to a complementary document, called Release Notes. The Release Notes contain clarifications and explanations on the CWA specifications, which are not requiring functional changes. The current version of the Release Notes is available online from: https://www.cen.eu/work/Sectors/Digital_society/Pages/WSXFS.aspx.

The information in this document represents the Workshop's current views on the issues discussed as of the date of publication. It is provided for informational purposes only and is subject to change without notice. CEN makes no warranty, express or implied, with respect to this document.

1. Migration Information

XFS 3.40 has been designed to minimize backwards compatibility issues. This document highlights the changes made to the Vendor Dependent Mode (VDM) Specification device class between version 3.30 and 3.40, by highlighting the additions and deletions to the text.

2. Vendor Dependent Mode

This specification describes the functionality of the services provided by the Vendor Dependent Mode (VDM) Service Provider under XFS, by defining the service-specific commands that can be issued, using the **WFSGetInfo**, **WFSAsyncGetInfo**, **WFSExecute** and **WFSAsyncExecute** functions.

In all device classes there needs to be some method of going into a vendor specific mode to allow for capabilities which go beyond the scope of the current XFS specifications. A typical usage of such a mode might be to handle some configuration or diagnostic type of function or perhaps perform some 'off-line' testing of the device. These functions are normally available on Self-Service devices in a mode traditionally referred to as Maintenance Mode or Supervisor Mode and usually require operator intervention. It is those vendor-specific functions not covered by (and not required to be covered by) XFS Service Providers that will be available once the device is in Vendor Dependent Mode.

This service provides the mechanism for switching to and from Vendor Dependent Mode. The VDM Service Provider can be seen as the central point through which all Enter and Exit VDM requests are synchronized.

Entry into, or exit from, Vendor Dependent Mode can be initiated either by an application or by the VDM Service Provider itself. If initiated by an application, then this application needs to issue the appropriate command to request entry or exit. If initiated by the VDM Service Provider i.e. some vendor dependent switch, then these request commands are in-appropriate and not issued.

Once the entry request has been made, all registered applications will be notified of the entry request by an event message. These applications must attempt to close all open sessions with XFS Service Providers (except for specific Service Providers which explicitly allow sessions to remain open) as soon as possible and then issue an acknowledgement command to the VDM Service Provider when ready. Once all applications have acknowledged, the VDM Service Provider will issue event messages to these applications to indicate that the System is in Vendor Dependent Mode.

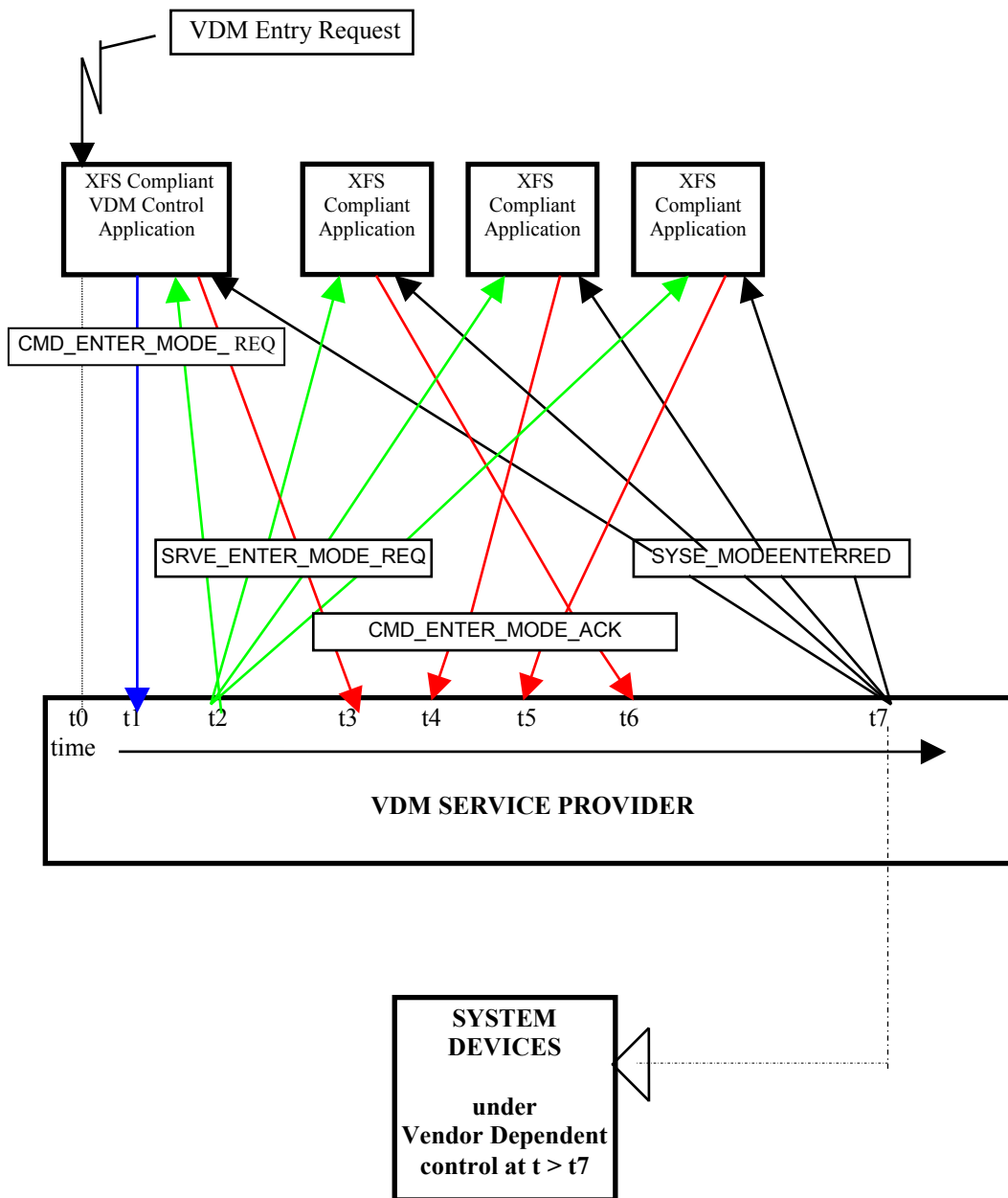
Similarly, once the exit request has been made all registered applications will be notified of the exit request by an event message. These applications must then issue an acknowledgement command to the VDM Service Provider immediately. Once all applications have acknowledged, the VDM Service Provider will issue event messages to these applications to indicate that the system has exited from Vendor Dependent Mode.

Thus, XFS compliant applications that do not request entry to Vendor Dependent Mode, must comply with the following:

- Every XFS application should open a session with the VDM Service Provider passing a valid ApplId and then register for all VDM entry and exit notices.
- Before opening a session with any other XFS Service Provider, check the status of the VDM Service Provider. If Vendor Dependent Mode is not "Inactive", do not open a session.
- When getting a VDM entry notice, close all open sessions with all XFS Service Providers which require sessions to be closed as soon as possible and issue an acknowledgement for the entry to VDM.
- When getting a VDM exit notice, acknowledge at once.
- When getting a VDM exited notice, re-open any required sessions with other XFS Service Providers.

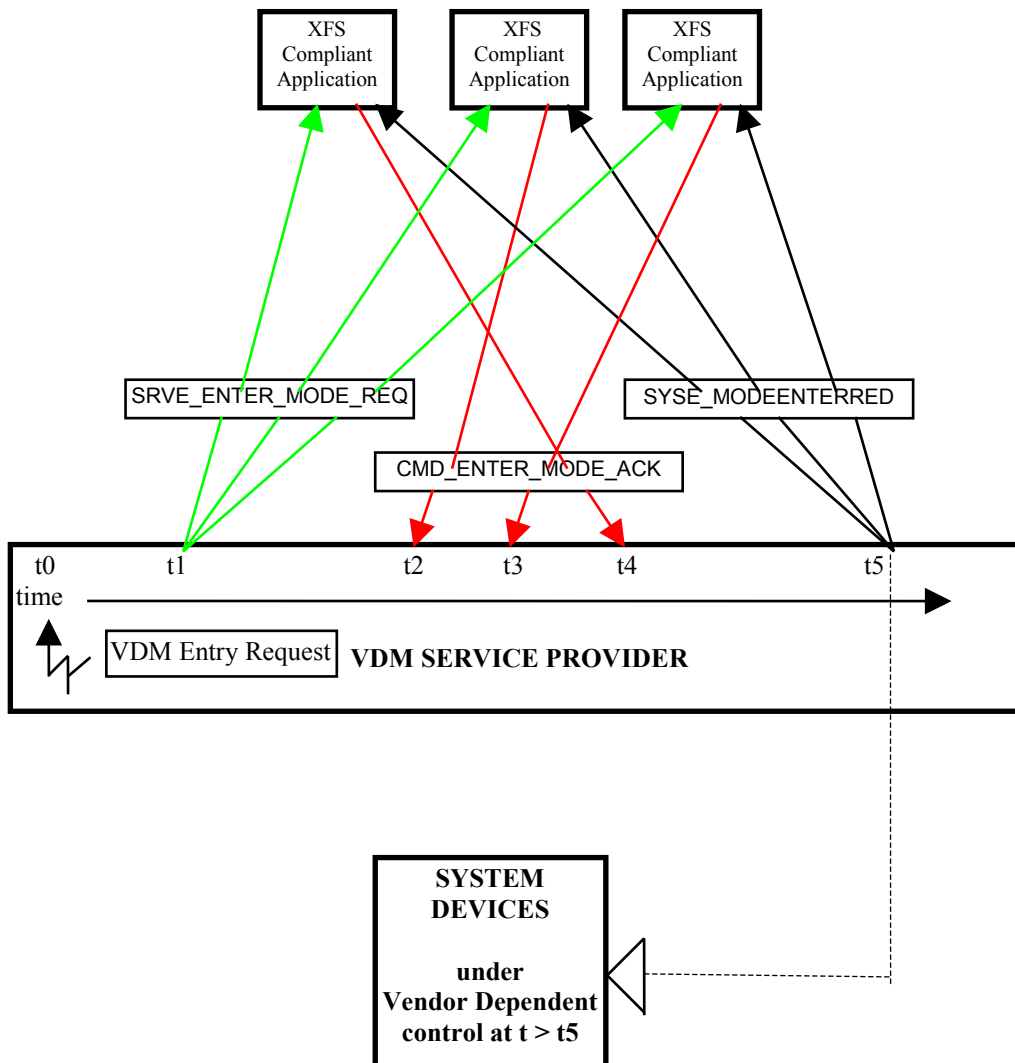
This is mandatory for self-service but optional for branch.

2.1 VDM Entry triggered by XFS Application



At time t_0 , status is "Inactive" and a request to Enter VDM arises from within the Application system.
 At time t_1 , an Application Process/Thread/Function issues the `CMD_ENTER_MODE_REQ` Execute cmd. Status then becomes "Enter Pending".
 At time t_2 , the VDM Service Provider issues the `SRVE_ENTER_MODE_REQ` Event to all registered applications.
 At time t_3 , the VDM Service Provider receives a `CMD_ENTER_MODE_ACK` Execute command from a XFS Compliant Application.
 At time t_4 , the VDM Service Provider receives a `CMD_ENTER_MODE_ACK` Execute command from a XFS Compliant Application.
 At time t_5 , the VDM Service Provider receives a `CMD_ENTER_MODE_ACK` Execute command from another XFS Compliant Application.
 At time t_6 , the VDM Service Provider receives a `CMD_ENTER_MODE_ACK` Execute command from the last XFS Compliant Application.
 At time t_7 , the VDM Service Provider issues the `SYSE_MODEENTERRED` Event to all registered applications Status then becomes "Active".
 The system is now in Vendor Dependent Mode and a Vendor Dependent Application can exclusively use the system devices in a Vendor Dependent manner.

2.2 VDM Entry triggered by Vendor Dependent Switch



At time t0, status is “Inactive” and a request to Enter VDM arises from within the Vendor System. Status then becomes “Enter Pending”.

At time t1, the VDM Service Provider issues the SRVE_ENTER_MODE_REQ Event to all registered applications.

At time t2, the VDM Service Provider receives a CMD_ENTER_MODE_ACK Execute command from a XFS Compliant Application.

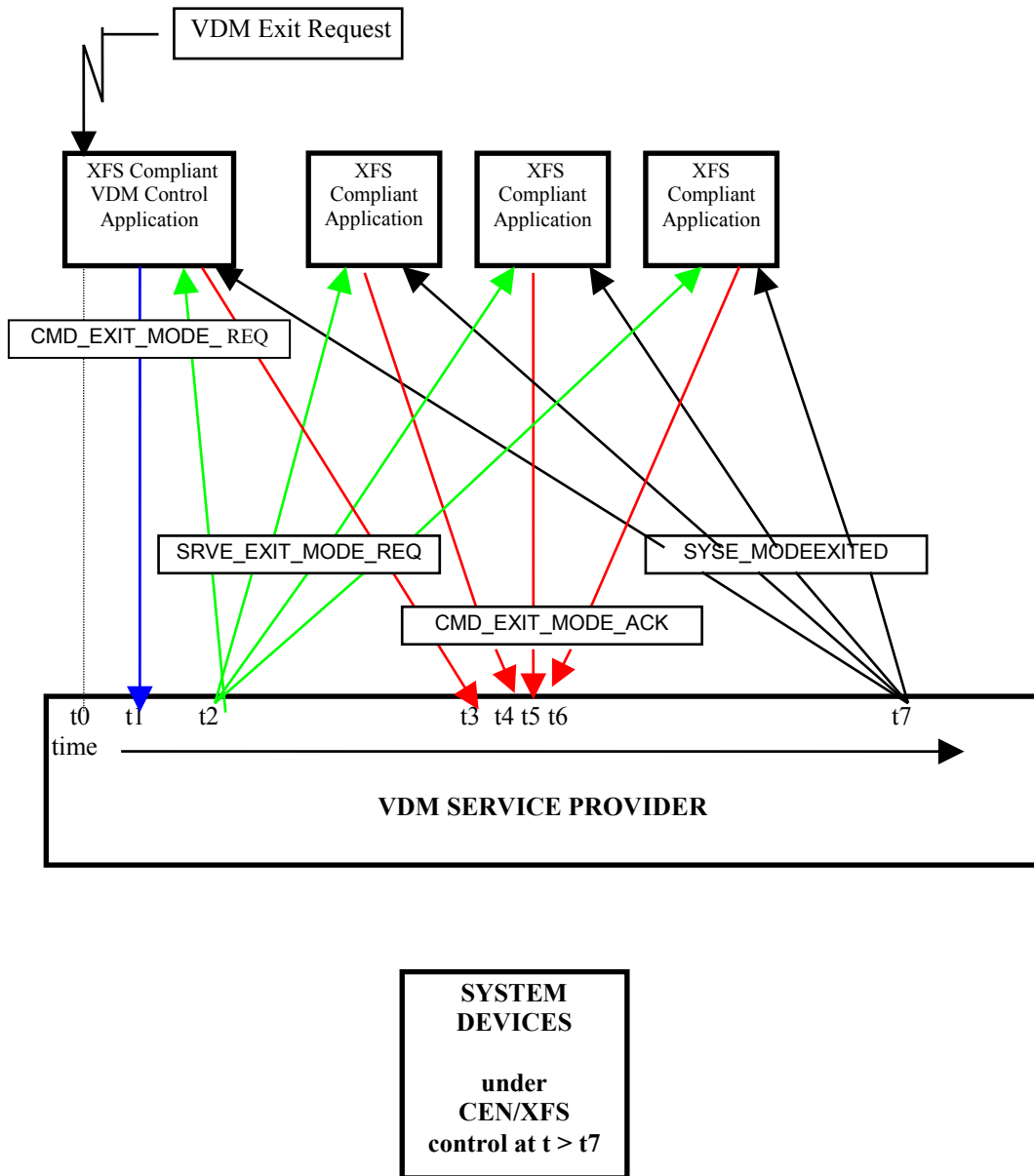
At time t3, the VDM Service Provider receives a CMD_ENTER_MODE_ACK Execute command from another XFS Compliant Application.

At time t4, the VDM Service Provider receives a CMD_ENTER_MODE_ACK Execute command from the last XFS Compliant Application.

At time t5, the VDM Service Provider issues the SYSE_MODEENTERRED Event to all registered applications. Status then becomes “Active”.

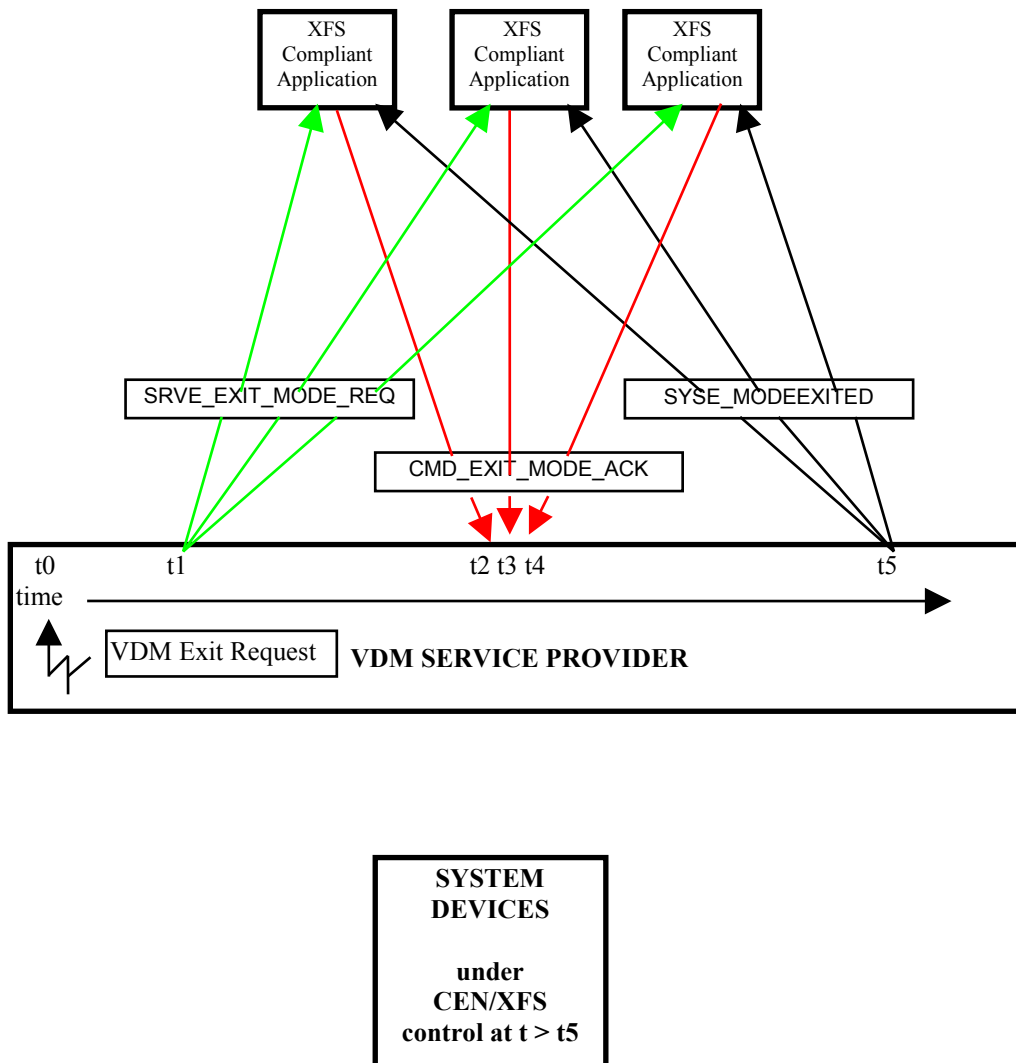
The system is now in Vendor Dependent Mode and a Vendor Dependent Application can exclusively use the system devices in a Vendor Dependent manner.

2.3 VDM Exit triggered by XFS Application



At time t_0 , status is “Active” and a request to Exit VDM arises from within the Application system.
 At time t_1 , an Application Process/Thread/Function issues the `CMD_EXIT_MODE_REQ` Execute cmd. Status then becomes “Exit Pending”.
 At time t_2 , the VDM Service Provider issues the `SRVE_EXIT_MODE_REQ` Event to all registered applications.
 At time t_3 , the VDM Service Provider receives a `CMD_EXIT_MODE_ACK` Execute command from a XFS Compliant Application.
 At time t_4 , the VDM Service Provider receives a `CMD_EXIT_MODE_ACK` Execute command from a XFS Compliant Application.
 At time t_5 , the VDM Service Provider receives a `CMD_EXIT_MODE_ACK` Execute command from another XFS Compliant Application.
 At time t_6 , the VDM Service Provider receives a `CMD_EXIT_MODE_ACK` Execute command from the last XFS Compliant Application.
 At time t_7 , the VDM Service Provider issues the `SYSE_MODEEXITED` Event to all registered applications Status then becomes “Inactive”.
 The system is now no longer in Vendor Dependent Mode and the XFS Compliant Applications can re-open any required services with other XFS Service Providers.

2.4 VDM Exit triggered by Vendor Dependent Switch



At time t0, status is “Active” and a request to Exit VDM arises from within the Vendor System. Status then becomes “Exit Pending”.

At time t1, the VDM Service Provider issues the SRVE_EXIT_MODE_REQ Event to all registered applications.

At time t2, the VDM Service Provider receives a CMD_EXIT_MODE_ACK Execute command from a XFS Compliant Application.

At time t3, the VDM Service Provider receives a CMD_EXIT_MODE_ACK Execute command from another XFS Compliant Application.

At time t4, the VDM Service Provider receives a CMD_EXIT_MODE_ACK Execute command from the last XFS Compliant Application.

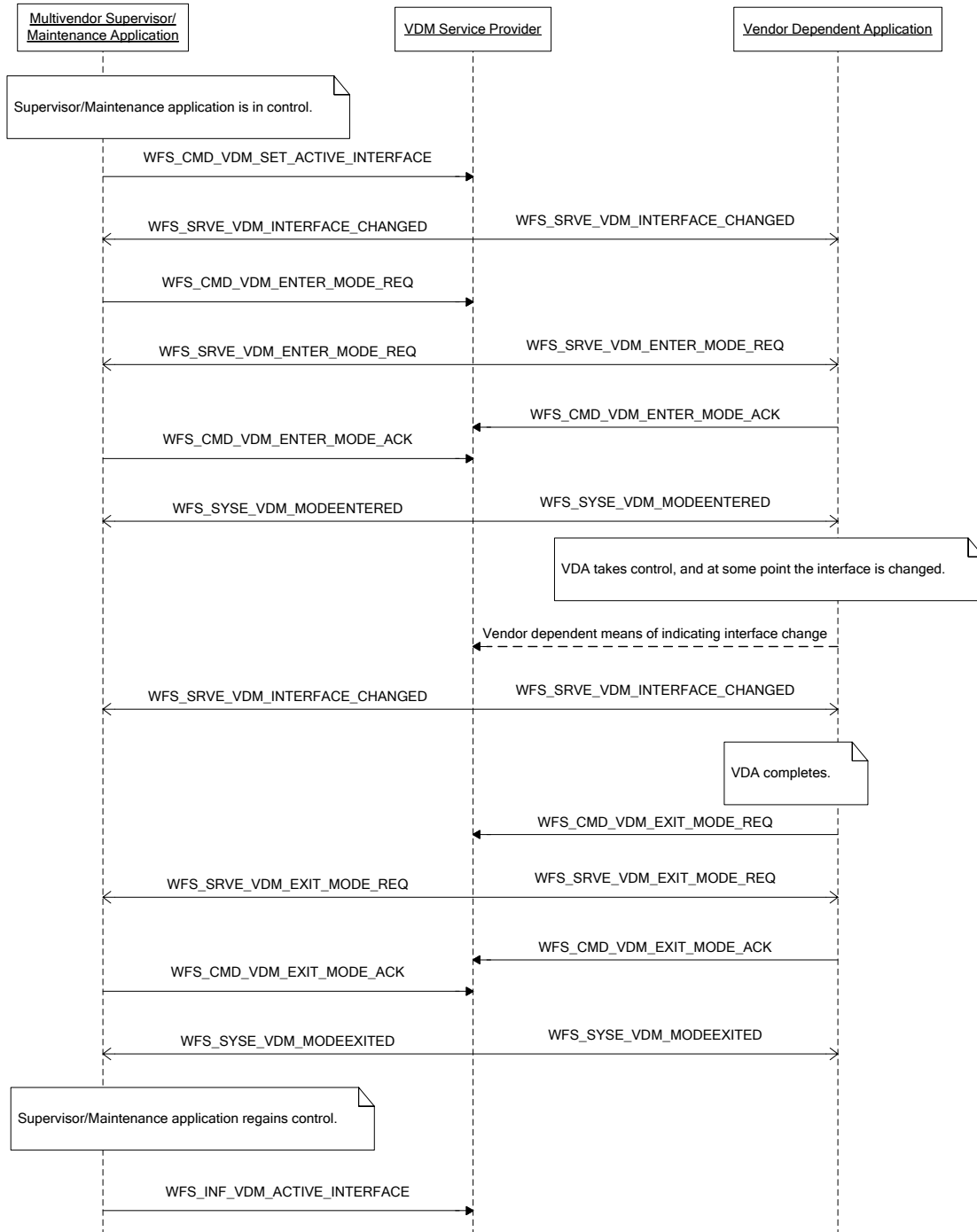
At time t5, the VDM Service Provider issues the SYSE_MODEEXITED Event to all registered applications. Status then becomes “Inactive”.

The system is now no longer in Vendor Dependent Mode and the XFS Compliant Applications can re-open any required services with other XFS Service Providers.

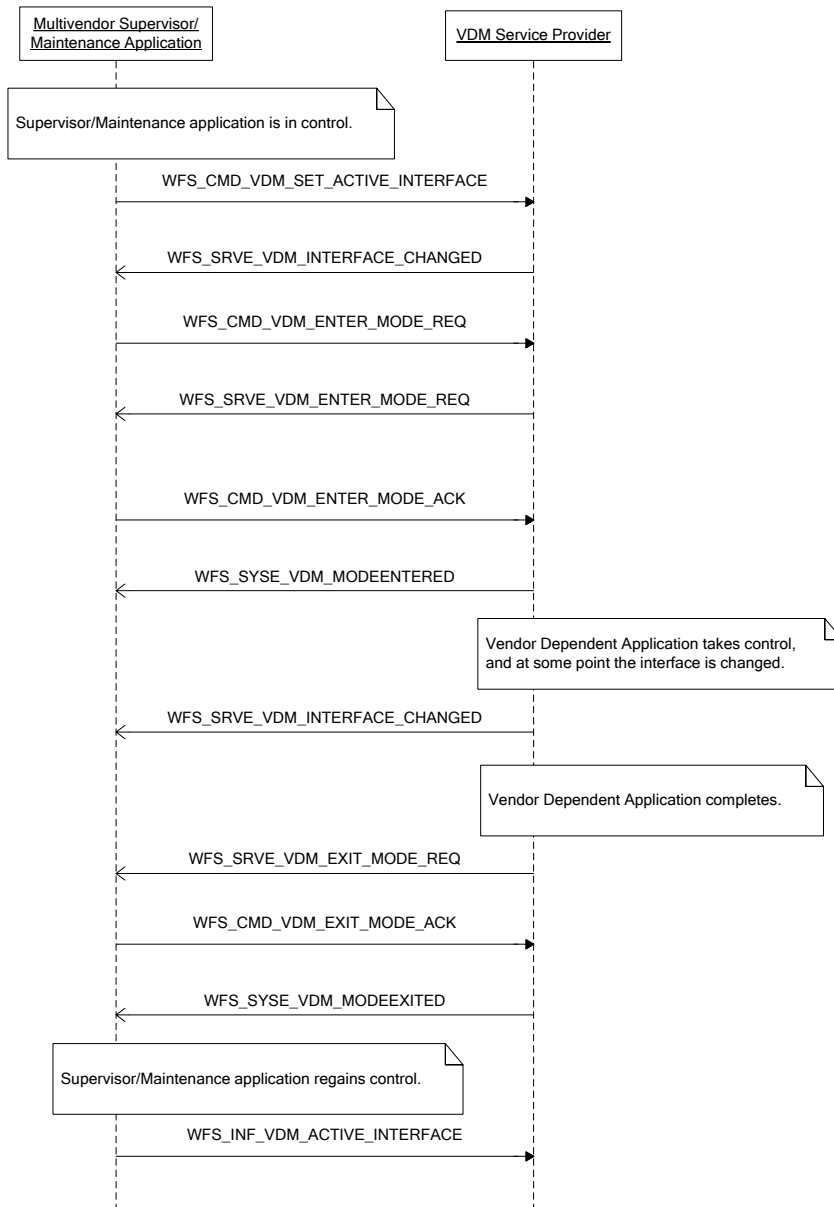
2.5 Controlling / Determining the Active Interface

While in a supervisor/maintenance application or Vendor Dependent Mode, it is possible to transfer from the consumer interface to the operator interface and vice-versa. The active interface can be determined and controlled, as described here.

2.5.1 Vendor Dependent Application independent of the VDM Service Provider



2.5.2 Vendor Dependent Application under Control of the VDM Service Provider



3. References

1. XFS Application Programming Interface (API)/Service Provider Interface (SPI), Programmer's Reference Revision 3.40
--

4. Info Commands

4.1 WFS_INF_VDM_STATUS

Description This command indicates whether or not the system is in Vendor Dependent Mode. It will also indicate which applications have not responded to the WFS_SRVE_ENTER_MODE_REQ event or WFS_SRVE_EXIT_MODE_REQ event if the current service status is WFS_VDM_ENTERPENDING or WFS_VDM_EXITPENDING respectively.

Input Param None.

Output Param LPWFSVDMSTATUS lpStatus;

```
typedef struct _wfs_vdm_status
{
    WORD                wDevice;
    WORD                wService;
    LPWFSVDMAPPSTATUS  *lppAppStatus;
    LPSTR               lpszExtra;
    WORD                wAccessLevel;
} WFSVDMSTATUS, *LPWFSVDMSTATUS;
```

wDevice

Specifies the status of the Vendor Dependent Mode Service Provider. Status will be one of the following flags:

Value	Meaning
WFS_VDM_DEVONLINE	Vendor Dependent Mode service available.
WFS_VDM_DEVOFFLINE	Vendor Dependent Mode service unavailable.

wService

Specifies the Service state as one of the following flags:

Value	Meaning
WFS_VDM_ENTERPENDING	Vendor Dependent Mode enter request pending.
WFS_VDM_ACTIVE	Vendor Dependent Mode active.
WFS_VDM_EXITPENDING	Vendor Dependent Mode exit request pending.
WFS_VDM_INACTIVE	Vendor Dependent Mode inactive.

lppAppStatus

Pointer to a NULL-terminated array of pointers to WFSVDMAPPSTATUS structures:

```
typedef struct _wfs_vdm_appstatus
{
    LPSTR                lpszAppID;
    WORD                wAppStatus;
} WFSVDMAPPSTATUS, *LPWFSVDMAPPSTATUS;
```

lpszAppID

Application ID string.

wAppStatus

Specifies whether the particular application is ready for the system to enter or exit Vendor Dependent Mode. Values can be one of the following:

Value	Meaning
WFS_VDM_ENTERPENDING	Application not yet ready to enter VDM.
WFS_VDM_ACTIVE	Application ready to enter VDM.
WFS_VDM_EXITPENDING	Application not yet ready to exit VDM.
WFS_VDM_INACTIVE	Application ready to exit VDM.

lpzExtra

Pointer to a list of vendor-specific, or any other extended, information. The information is returned as a series of “*key=value*” strings so that it is easily extensible by Service Providers. Each string is null-terminated, with the final string terminating with two null characters. An empty list may be indicated by either a NULL pointer or a pointer to two consecutive null characters

wAccessLevel

Reports the current access level as one of the following flags:

Value	Meaning
WFS_VDM_ACCESSNOTSUPPORTED	The reporting of the current access level is not supported.
WFS_VDM_ACCESSNA	The Vendor Dependent Mode is not active and the access level has not been set.
WFS_VDM_ACCESSUNKNOWN	The Vendor Dependent Mode is active but the access level has not been set. Or due to an error condition the reporting of the currently access level is not supported.
WFS_VDM_ACCESSBASIC	The Vendor Dependent Mode is active for the basic access level.
WFS_VDM_ACCESSINTERMEDIATE	The Vendor Dependent Mode is active for the intermediate access level.
WFS_VDM_ACCESSFULL	The Vendor Dependent Mode is active for the full access level.

Error Codes Only the generic error codes defined in [Ref. 1] can be generated by this command.

Comments Applications which require or expect specific information to be present in the *lpzExtra* parameter may not be device or vendor-independent.

4.2 WFS_INF_VDM_CAPABILITIES

Description This command is used to retrieve the capabilities of the VDM Service Provider.

Input Param None.

Output Param LPWFSVDMCAPS lpCaps;

```
typedef struct _wfs_vdm_caps
{
    WORD                wClass;
    LPSTR               lpszExtra;
    WORD                fwSupportedAccessLevels;
} WFSVDMCAPS, *LPWFSVDMCAPS;
```

wClass

Specifies the logical service class as SERVICE_CLASS_VDM.

lpszExtra

Pointer to a list of vendor-specific, or any other extended, information. The information is returned as a series of “*key=value*” strings so that it is easily extensible by Service Providers. Each string is null-terminated, with the final string terminating with two null characters. An empty list may be indicated by either a NULL pointer or a pointer to two consecutive null characters

fwSupportedAccessLevels

Specifies the supported access levels. This allows the Vendor Dependent Mode to show a user interface with reduced or extended functionality depending on the access levels. The exact meaning or functionalities definition is left to the vendor. If no access levels are supported this field will be WFS_VDM_ACCESSNOTSUPPORTED. Otherwise this field will be set to a combination of the following flags:

Value	Meaning
WFS_VDM_ACCESSBASIC	The Vendor Dependent Mode is active for the basic access level. Once the Vendor Dependent Mode is active the Vendor Dependent Mode interface will show the user interface for the basic access level.
WFS_VDM_ACCESSINTERMEDIATE	The Vendor Dependent Mode is active for the intermediate access level. Once the Vendor Dependent Mode is active the Vendor Dependent Mode interface will show the user interface for the intermediate access level.
WFS_VDM_ACCESSFULL	The Vendor Dependent Mode is active for the full access level. Once the Vendor Dependent Mode is active the Vendor Dependent Mode interface will show the user interface for the full access level.

Error Codes Only the generic error codes defined in [Ref. 1] can be generated by this command.

Comments Applications which require or expect specific information to be present in the *lpszExtra* parameter may not be device or vendor-independent.

4.3 WFS_INF_VDM_ACTIVE_INTERFACE

Description This command is used to retrieve the interface that should be used by supervisor/maintenance mode applications.

Input Param None.

Output Param LPWFSVDMACTIVEINTERFACE lpActiveInterface;

```
typedef struct _wfs_vdm_active_interface
{
    WORD wActiveInterface;
} WFSVDMACTIVEINTERFACE, *LPWFSVDMACTIVEINTERFACE;
```

wActiveInterface

Specifies the interface as one of the following values:

Value	Meaning
WFS_VDM_CONSUMER_INTERFACE	The consumer interface.
WFS_VDM_OPERATOR_INTERFACE	The operator interface.

Error Codes Only the generic error codes defined in [Ref. 1] can be generated by this command.

Comments None.

5. Execute Commands

5.1 WFS_CMD_VDM_ENTER_MODE_REQ

Description This command is issued by an application to indicate a logical request to enter Vendor Dependent Mode. The VDM Service Provider will then indicate the request to all registered applications by sending a WFS_SRVE_VDM_ENTER_MODE_REQ event and then wait for an acknowledgement back from each registered application before putting the system into Vendor Dependent Mode. The Service Provider status will change to WFS_VDM_ENTERPENDING on receipt of this command and will prevail until all applications have acknowledged, at which time the status will change to WFS_VDM_ACTIVE and the WFS_CMD_VDM_ENTER_MODE_REQ completes.

If the command fails when the status is WFS_VDM_ENTERPENDING, the status is changed to WFS_VDM_INACTIVE and a WFS_SYSE_VDM_MODEEXITED event is sent to all registered applications.

Input Param This input parameter should be NULL if the capability *fwSupportedAccessLevels* is WFS_VDM_ACCESSNOTSUPPORTED. If NULL is specified then the service provider will determine the level of access available. If the level of access is to be changed then a VDM exit should be performed, followed by another enter mode request specifying the new level of access.

LPWFSVDMENTERMODEREQCMD lpEnterModeReqCmd;

```
typedef struct _wfs_vdm_enter_mode_req_cmd
{
    WORD wAccessLevel;
} WFSVDMENTERMODEREQCMD, *LPWFSVDMENTERMODEREQCMD;
```

wAccessLevel

Defines the access level for the Vendor Dependent Mode interface as one of the flags reported with the *fwSupportedAccessLevels* capability.

Output Param None.

Error Codes Only the generic error codes defined in [Ref. 1] can be generated by this command.

Events In addition to the generic events defined in [Ref. 1], the following events can be generated by this command:

Value	Meaning
WFS_SRVE_VDM_ENTER_MODE_REQ	Request to enter VDM Mode.
WFS_SYSE_VDM_MODEENTERED	The system has entered VDM.
WFS_SYSE_VDM_MODEEXITED	The system has exited VDM.

Comments None.

5.2 WFS_CMD_VDM_ENTER_MODE_ACK

Description This command is issued by a registered application as an acknowledgement to the WFS_SRVE_VDM_ENTER_MODE_REQ event and it indicates that the application is ready for the system to enter Vendor Dependent Mode. All registered applications (including the application that issued the request to enter Vendor Dependent Mode) must respond before Vendor Dependent Mode will be entered. Completion of this command is immediate.

Note: Applications must be prepared to allow the Vendor Dependent Application to display on the active interface. This means that applications should no longer try to be the foreground or topmost window to ensure that the Vendor Dependent Application is visible.

Input Param None.

Output Param None.

Error Codes Only the generic error codes defined in [Ref. 1] can be generated by this command.

Events Only the generic events defined in [Ref. 1] can be generated by this command.

Comments None.

5.3 WFS_CMD_VDM_EXIT_MODE_REQ

Description This command is issued by an application to indicate a logical request to exit Vendor Dependent Mode. The VDM Service Provider will then indicate the request to all registered applications by sending a WFS_SRVE_VDM_EXIT_MODE_REQ event and then wait for an acknowledgement back from each registered application before removing the system from Vendor Dependent Mode. The Service Class status will change to WFS_VDM_EXITPENDING on receipt of this command and will prevail until all applications have acknowledged, at which time the status will change to WFS_VDM_INACTIVE and the WFS_CMD_VDM_EXIT_MODE_REQ completes.

If the command fails when the status is WFS_VDM_EXITPENDING, the status is changed to WFS_VDM_ACTIVE and a WFS_SYSE_VDM_MODEENTERED event is sent to all registered applications.

Input Param None.

Output Param None.

Error Codes Only the generic error codes defined in [Ref. 1] can be generated by this command.

Events In addition to the generic events defined in [Ref. 1], the following events can be generated by this command:

Value	Meaning
WFS_SRVE_VDM_EXIT_MODE_REQ	Request to exit VDM.
WFS_SYSE_VDM_MODEENTERED	The system has entered VDM.
WFS_SYSE_VDM_MODEEXITED	The system has exited VDM.

Comments None.

5.4 WFS_CMD_VDM_EXIT_MODE_ACK

Description	This command is issued by a registered application as an acknowledgement to the WFS_SRVE_VDM_EXIT_MODE_REQ event and it indicates that the application is ready for the system to exit Vendor Dependent Mode. All registered applications (including the application that issued the request to exit Vendor Dependent Mode) must respond before Vendor Dependent Mode will be exited. Completion of this command is immediate.
Input Param	None.
Output Param	None.
Error Codes	Only the generic error codes defined in [Ref. 1] can be generated by this command.
Events	Only the generic events defined in [Ref. 1] can be generated by this command.
Comments	None.

5.5 WFS_CMD_VDM_SET_ACTIVE_INTERFACE

Description	This command is used to indicate which interface should be used by supervisor/maintenance mode applications. A supervisor/maintenance mode application can issue this command before entry to VDM to ensure that a Vendor Dependent Application (VDA) starts on the correct interface.				
Input Param	LPWFSVDMACTIVEINTERFACE <i>lpActiveInterface</i> ; <i>lpActiveInterface</i> Pointer to a WFSVDMACTIVEINTERFACE structure. For a description of the WFSVDMACTIVEINTERFACE structure refer to the WFS_INF_VDM_ACTIVE_INTERFACE command.				
Output Param	None.				
Error Codes	In addition to the generic error codes defined in [Ref. 1], the following error codes can be generated by this command.				
	<table> <thead> <tr> <th>Value</th> <th>Meaning</th> </tr> </thead> <tbody> <tr> <td>WFS_ERR_VDM_INTERFACE_NOT_AVAILABLE</td> <td>The <i>wActiveInterface</i> provided in the input parameter is not present or not available.</td> </tr> </tbody> </table>	Value	Meaning	WFS_ERR_VDM_INTERFACE_NOT_AVAILABLE	The <i>wActiveInterface</i> provided in the input parameter is not present or not available.
Value	Meaning				
WFS_ERR_VDM_INTERFACE_NOT_AVAILABLE	The <i>wActiveInterface</i> provided in the input parameter is not present or not available.				
Events	In addition to the generic events defined in [Ref. 1], the following events can be generated by this command:				
	<table> <thead> <tr> <th>Value</th> <th>Meaning</th> </tr> </thead> <tbody> <tr> <td>WFS_SRVE_VDM_INTERFACE_CHANGED</td> <td>The active VDM interface has changed.</td> </tr> </tbody> </table>	Value	Meaning	WFS_SRVE_VDM_INTERFACE_CHANGED	The active VDM interface has changed.
Value	Meaning				
WFS_SRVE_VDM_INTERFACE_CHANGED	The active VDM interface has changed.				
Comments	None.				

6. Events

6.1 WFS_SRVE_VDM_ENTER_MODE_REQ

Description	This service event is used to indicate the request to enter Vendor Dependent Mode.
Event Param	None.
Comments	None.

6.2 WFS_SRVE_VDM_EXIT_MODE_REQ

Description	This service event is used to indicate the request to exit Vendor Dependent Mode.
Event Param	None.
Comments	None.

6.3 WFS_SYSE_VDM_MODEENTERED

Description	This system event is used to indicate that the system has entered Vendor Dependent Mode.
Event Param	None.
Comments	None.

6.4 WFS_SYSE_VDM_MODEEXITED

Description	This system event is used to indicate that the system has exited Vendor Dependent Mode.
Event Param	None.
Comments	None.

6.5 WFS_SRVE_VDM_INTERFACE_CHANGED

Description	<p>This service event is used to indicate that the required interface has changed. This can be as a result of a WFS_CMD_VDM_SET_ACTIVE_INTERFACE command, or when the active interface is changed through vendor dependent means while in VDM. The <i>wActiveInterface</i> field of the WFSVDMACTIVEINTERFACE structure indicates which interface has been selected.</p> <p>Note: Applications must be prepared to allow the Vendor Dependent Application to display on the active interface. This means that applications should no longer try to be the foreground or topmost window to ensure that the Vendor Dependent Application is visible.</p>
Event Param	<p>LPWFSVDMACTIVEINTERFACE lpActiveInterface;</p> <p><i>lpActiveInterface</i> Pointer to a WFSVDMACTIVEINTERFACE structure. For a description of the WFSVDMACTIVEINTERFACE structure refer to the WFS_INF_VDM_ACTIVE_INTERFACE command.</p>
Comments	None.

7. C-Header file

```

/*****
*
* xfsvdm.h      XFS - Vendor Dependent Mode (VDM) definitions
*
*              Version 3.40   (December 6 2019)
*
*****/

#ifndef __INC_XFSVDM_H
#define __INC_XFSVDM_H

#ifdef __cplusplus
extern "C" {
#endif

#include <xfsapi.h>

/* be aware of alignment */
#pragma pack(push,1)

/* values of WFSVDMCAPS.wClass */

#define WFS_SERVICE_CLASS_VDM                (9)
#define WFS_SERVICE_CLASS_VERSION_VDM      (0x2803) /* Version 3.40 */
#define WFS_SERVICE_CLASS_NAME_VDM        "VDM"

#define VDM_SERVICE_OFFSET                  (WFS_SERVICE_CLASS_VDM * 100)

/* VDM Info Commands */

#define WFS_INF_VDM_STATUS                   (VDM_SERVICE_OFFSET + 1)
#define WFS_INF_VDM_CAPABILITIES            (VDM_SERVICE_OFFSET + 2)
#define WFS_INF_VDM_ACTIVE_INTERFACE        (VDM_SERVICE_OFFSET + 3)

/* VDM Execute Commands */

#define WFS_CMD_VDM_ENTER_MODE_REQ          (VDM_SERVICE_OFFSET + 1)
#define WFS_CMD_VDM_ENTER_MODE_ACK         (VDM_SERVICE_OFFSET + 2)
#define WFS_CMD_VDM_EXIT_MODE_REQ          (VDM_SERVICE_OFFSET + 3)
#define WFS_CMD_VDM_EXIT_MODE_ACK          (VDM_SERVICE_OFFSET + 4)
#define WFS_CMD_VDM_SET_ACTIVE_INTERFACE    (VDM_SERVICE_OFFSET + 5)

/* VDM Messages */

#define WFS_SRVE_VDM_ENTER_MODE_REQ         (VDM_SERVICE_OFFSET + 1)
#define WFS_SRVE_VDM_EXIT_MODE_REQ         (VDM_SERVICE_OFFSET + 2)
#define WFS_SYSE_VDM_MODEENTERED           (VDM_SERVICE_OFFSET + 3)
#define WFS_SYSE_VDM_MODEEXITED           (VDM_SERVICE_OFFSET + 4)
#define WFS_SRVE_VDM_INTERFACE_CHANGED      (VDM_SERVICE_OFFSET + 5)

/* values of WFSVDMSTATUS.wDevice */

#define WFS_VDM_DEVONLINE                   WFS_STAT_DEVONLINE
#define WFS_VDM_DEVOFFLINE                  WFS_STAT_DEVOFFLINE

/* values of WFSVDMSTATUS.wService */

#define WFS_VDM_ENTERPENDING                (0)
#define WFS_VDM_ACTIVE                      (1)
#define WFS_VDM_EXITPENDING                 (2)
#define WFS_VDM_INACTIVE                    (3)

/* values of WFSVDMSTATUS.wActiveAccessLevel */

#define WFS_VDM_ACCESSNOTSUPPORTED          (0x0000)
#define WFS_VDM_ACCESSNA                    (0x0001)
#define WFS_VDM_ACCESSUNKNOWN              (0x0002)

```

```

#define WFS_VDM_ACCESSBASIC                (0x0004)
#define WFS_VDM_ACCESSINTERMEDIATE        (0x0008)
#define WFS_VDM_ACCESSFULL                (0x0010)

/* values of WFSVDMACTIVEINTERFACE.wActiveInterface */

#define WFS_VDM_OPERATOR_INTERFACE        (0)
#define WFS_VDM_CONSUMER_INTERFACE        (1)

/* XFS VDM Errors */

#define WFS_ERR_VDM_INTERFACE_NOT_AVAILABLE    (- (VDM_SERVICE_OFFSET + 0))

/*=====*/
/* VDM Info Command Structures and variables */
/*=====*/

typedef struct _wfs_vdm_appstatus
{
    LPSTR                lpszAppID;
    WORD                 wAppStatus;
} WFSVDMAPPSTATUS, *LPWFSVDMAPPSTATUS;

typedef struct _wfs_vdm_status
{
    WORD                 wDevice;
    WORD                 wService;
    LPWFSVDMAPPSTATUS    *lppAppStatus;
    LPSTR                lpszExtra;
    WORD                 wAccessLevel;
} WFSVDMSTATUS, *LPWFSVDMSTATUS;

typedef struct _wfs_vdm_caps
{
    WORD                 wClass;
    LPSTR                lpszExtra;
    WORD                 fwSupportedAccessLevels;
} WFSVDMCAPS, *LPWFSVDMCAPS;

typedef struct _wfs_vdm_active_interface
{
    WORD                 wActiveInterface;
} WFSVDMACTIVEINTERFACE, *LPWFSVDMACTIVEINTERFACE;

/*=====*/
/* VDM Execute Command Structures */
/*=====*/

typedef struct _wfs_vdm_enter_mode_req_cmd
{
    WORD                 wAccessLevel;
} WFSVDMENTERMODEREQCMD, *LPWFSVDMENTERMODEREQCMD;

/*=====*/
/* VDM Message Structures */
/*=====*/

/* restore alignment */
#pragma pack(pop)

#ifdef __cplusplus
} /*extern "C"*/
#endif
#endif /* __INC_XFSVDM__H */

```